

2009 IBC / IFC

Photoluminescent Requirements

Overview

- In 2003 – 2006, there were an estimated **13,400 high-rise structure fires per year**
- These fires resulted in **62 civilian deaths and 490 civilian injuries**
- The majority of high-rise fires started on floors 1 – 6
- NFPA 101 Life Code has helped to reduce these numbers, but there are still gaps
- 2009 IBC covers new/remodeled buildings
- 2009 IFC covers existing buildings

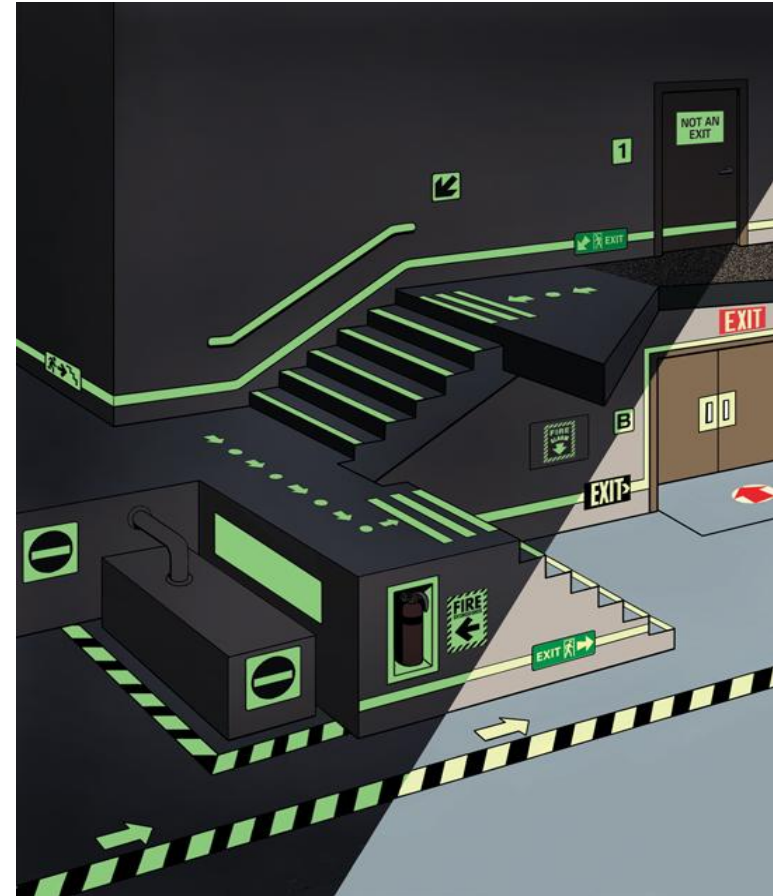
Hall, J.R., (2009). *High-Rise Building Fires*.
National Fire Protection Association,

Overview

- Luminous markings help employees and residents to evacuate buildings quickly and safely in the event of an emergency
- New Floor Identification signs will help occupants locate final egress pathways quickly
- Floor ID signs will also aid rescue personnel in quickly navigating large buildings
- 10 States have adopted the 2009 IBC codes
 - California
 - Illinois
 - Iowa
 - Maine (effective 6/2010)
 - Maryland
 - Oregon (effective 4/2010)
 - Pennsylvania
 - Utah (effective 7/2010)
 - Washington (effective 7/2010)
 - West Virginia

2009 IBC/IFC

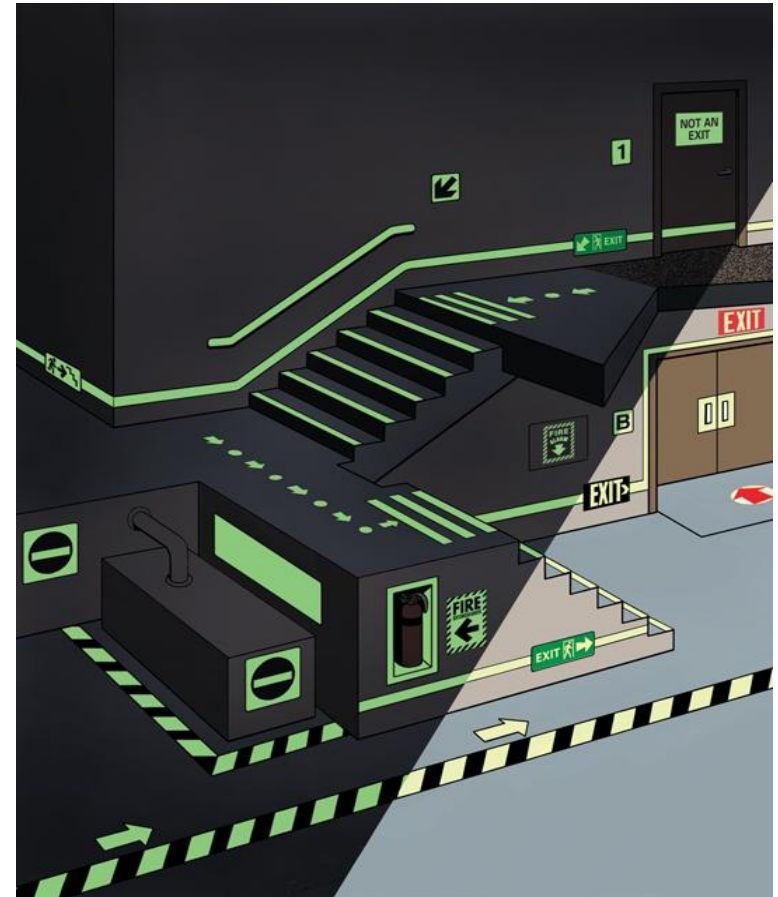
- Luminous egress markings required in buildings over 75 feet above lowest level of Fire Dept. Entry point
 - Institutional/Hospitals
 - Public Assembly
 - R-1 Residential (Hotels, Motels, Boarding Houses)
 - Educational
 - Hotel
 - Business
- All exit pathways required to have luminous markings
 - Doors
 - Perimeters
 - Handrails
 - Landings
 - Steps
 - Obstacles



2009 IBC/IFC

Luminous markings required for all exit pathways

Exit Component	Requirements
Stairwell	Floor Identification Sign
Doors	Door Frame marking Door handle marking Running man symbol
Landings	Perimeter demarcation lines (floor or wall mounted)
Steps	Leading edge of each step
Handrails	Top of handrail
Obstacles	Must be marked up to 6' 6" in height



Floor Identification Signs

2009 IBC / IFC Regulation

- Every floor landing in exit enclosures that connect more than three stories must have signage designating:
 - Identification of stair or ramp
 - Floor level (must be a number & tactile)
 - Braille floor identifier
 - Terminus of the top and bottom of exit enclosure
 - Availability of roof access from the enclosure
 - Story and direction to the exit discharge
- Minimum size 18" x 12"
- Sign must be located 5' above landing where it is readily visible when doors are open and closed
- Floor ID signs use 7812 glow and will glow for several hours in the event of a blackout or emergency situation
- Call for custom pricing
 - Customers need to supply information for all stairwells/floors



For more information

- [2009 International Building Code](#)
- [2009 International Fire Code](#)
- [NMC Glow Products](#)

Or contact NMC at 800.453.2727 for more information